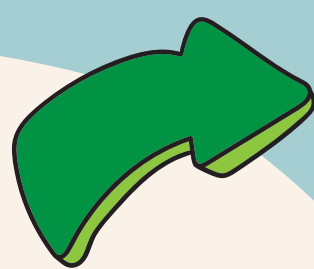


HOW TO USE.... 'SUPPORTING YOUNG CARERS IN SCHOOL, GOOD PRACTICE GUIDELINES'

1. Share it with your students!

Do you have a Young Carers Group or a School Council? Share the guidance with them and ask how they think it can be implemented.

All children can have a say in the process.



2. Share it with all members of staff

Share the guidance with TA's , administration staff, lunch time supervisors, play assistants and janitors. Everyone can play a role in identifying and supporting young carers.

3. Create a school action plan

Break each section down and create a plan for putting the guidance into action. Evaluate the plan regularly. Your local young carers service can support with this!



Talk to parents 4.

Share the guidance with parents and pool their ideas of how the guidance can support young carers. Provide frequent opportunities for parents to identify their children as young carers.

5. Use it as the basis of a Young Carers Policy

We know that writing any policy from scratch is tricky! Use the guidance to form the basis of a great Young Carers Policy.



We Care congratulations 6.

Using the guidance is fantastic evidence for the We Care Award. Demonstrate how the guidance has been used to create a whole school policy, to identify hidden young carers and support individual young people.

7. GIRFEC, CPM meetings

Use the guidance at meetings to ensure the correct support is offered to young people. Involve young people in planning their support and deciding what works for them!



Delegate! 8.

Create a team to action the guidance, utilise the amazing skills your school has in-house and reach out to your local young carers service for support.